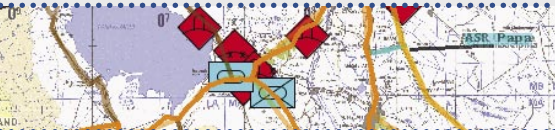


SpatialFX[®] Military Symbology

A critical part of any military command, control and intelligence system is its ability to display real-time information in a clear and unambiguous way. To support this need, the U.S. Defense Information

Systems Agency created Military Standard 2525B to ensure that all branches of the military, as well as related agencies and private sector activities, would share a common symbology. The optional SpatialFX

Military Symbology module is a complete, scalable and flexible implementation of MIL-STD-2525B that has been deployed in multiple fielded programs.



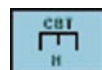
Consistent symbology, combined with the ability to present dynamic views of military operations, can provide a common operational picture to all levels, from military planners to warfighters.

Applications of Military Symbology

- Command, Control and Intelligence
- Theatre Visualization
- Situational Awareness
- Planning and Analysis
- Multi-Source Intelligence Fusion
- Historical Review
- Blue Force Tracking
- Threat Integration

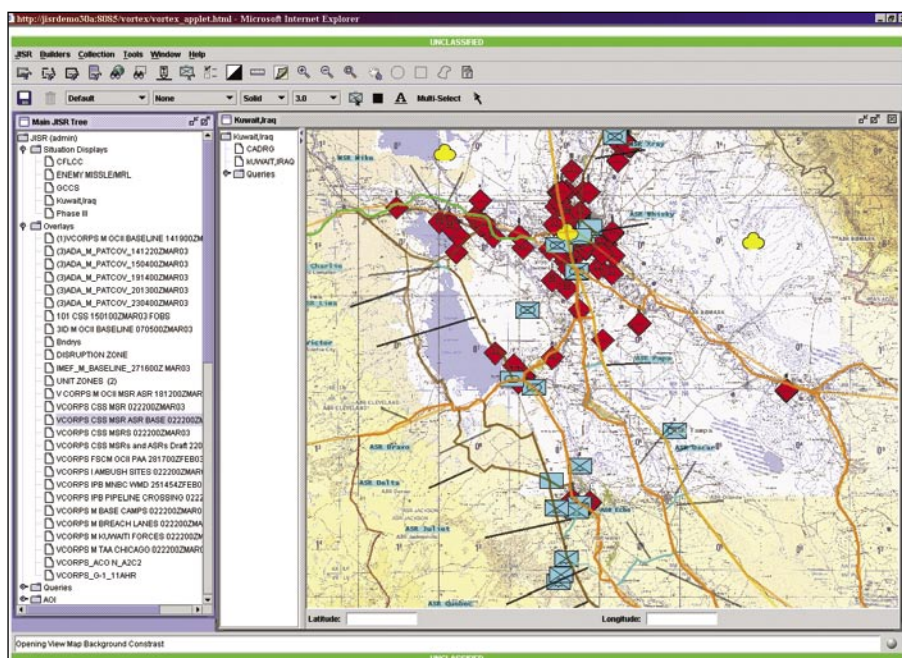
SpatialFX Military Symbology Features

- Accurate rendering of tactical symbols and graphics
- Support for all five appendices of MIL-STD-2525B, including Control Graphic Symbols:
 - Units, Equipment, and Installations
 - Military Operations
 - Naval Meteorology and Oceanography
 - Signals Intelligence
 - Military Operations Other Than War
- Based on 15-character symbol codes specified in MIL-STD-2525B
- Ability to customize size and fill
- High performance rendering of symbols
- Client- or server-based rendering allows system architects to optimize application performance
- Symbol caching can be pre-configured to cache most frequently used symbols
- Includes symbol database



SPATIALFX MILITARY SYMBOLOGY

Modern military doctrine defines Common Operational Picture (COP) as “a single identical display of relevant information shared by more than one command.” An effective COP facilitates collaborative planning and creates “situational awareness” at all echelons of the command structure. Applications based on the SpatialFX platform can support a full range of client devices, from a high-level war room display to a field commander’s handheld device operating with limited bandwidth or intermittent connectivity, all sharing the same common picture and military symbols.



A web-based view of a military situation using the SpatialFX Military Symbolology module.

ABOUT SPATIALFX

SpatialFX is an innovative and patented Java enterprise software platform that provides advanced spatial and geospatial capabilities, including 2D and 3D visualization, spatial rules and events, vehicle tracking and routing, address geocoding and specialized symbology. With SpatialFX, you can layer static or dynamic data from multiple sources over interactive geospatial backdrops for visualization, analysis and multi-source intelligence fusion on a full range of client devices.



ObjectFX[®]

ObjectFX Corporation

For More Information:

Visit <http://www.objectfx.com>

Email: info@objectfx.com

Or Call:

866-900-2002

(US and Canada)

Corporate Headquarters

ObjectFX Corporation

10 Second Street NE, Suite 400

Minneapolis, MN 55413

Phone: 612-312-2002

Fax: 612-312-2555

Government Division

10440 Little Patuxent Pkwy.,

Suite 300

Columbia, MD 21044

Phone: (410) 884-4090

Fax: (410) 884-4091

Copyright 2006 ObjectFX Corporation. All Rights Reserved. ObjectFX[®] and SpatialFX[®] are trademarks of ObjectFX Corporation registered in the U.S. Patent and Trademark Office and elsewhere. All other trademarks are the property of their respective trademark holders. SpatialFX is covered by U.S. Patent Number 6,604,046 and other issued and pending patents. Java and all Java-based marks are the trademarks or registered trademarks of Sun Microsystems, Inc. All other trademarks are registered or unregistered trademarks of their respective trademark holders.

Rev. 060201