

Web Mapping Tools

Integrate enterprise data with maps and imagery

Applications

Use maps as gateways into multiple information sources, or even to provide real-time views of dynamic information such as vehicle locations, network traffic, troop deployments, or the status of geographically dispersed projects.

Intelligence, Law Enforcement and Homeland Security

- Intelligence Data Fusion
- Law Enforcement
- First Responder Support
- Public Health Monitoring
- Counter Drug Support
- HAZMAT Vehicle Tracking

Military

- Mission Planning
- Situational Awareness
- Battlefield Visualization
- Tracking and Collection
- Multi-Source Intelligence Data Fusion
- In-Transit Visibility

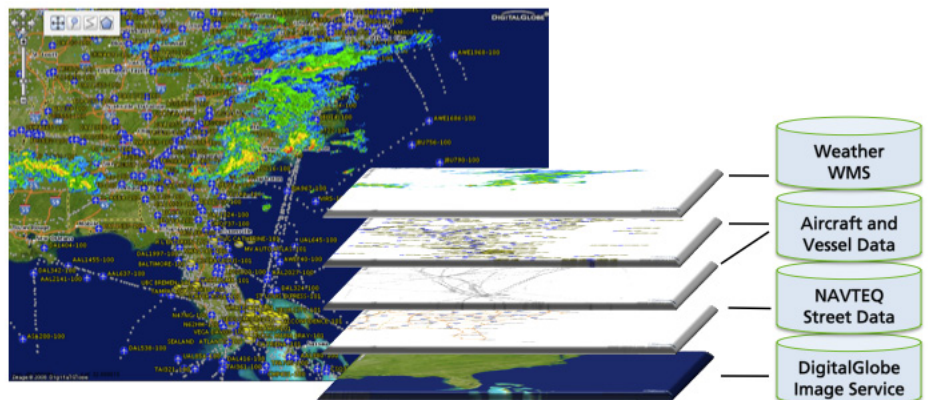
Commercial

- Mobile Asset Tracking
- Field Force Automation
- Customer Relationship Management
- Healthcare Management
- Transportation Logistics
- Business Intelligence

Version 4.4

Displaying imagery, maps, and a myriad of data elements from multiple sources is challenging. Providing a fluid and interactive user experience, while displaying large amounts of dynamic data in a web application, is even more difficult. To meet application demands like these, your visualization tools must be as sophisticated as your requirements. SpatialFX Web Mapping Tools (WMT) meet these challenges, arming software developers with the scalable visualization tools they need to build state-of-the-art web-based applications that integrate imagery, maps and data elements from multiple sources. Use SpatialFX to visualize complex maps, combine imagery and vector formats, integrate dynamic data, rapidly refresh views, and display large numbers of query results efficiently and in real-time.

SpatialFX provides Web 2.0 controls, tools, and services for integrating imagery and maps into any web application or Open Geospatial Consortium Web Map Service (OGC WMS) client. As a flexible GIS tool built for software developers, the SpatialFX WMT client is based on Dynamic Hypertext Markup Language (DHTML) and JavaScript. There is nothing users need to download and no plug-ins to install.



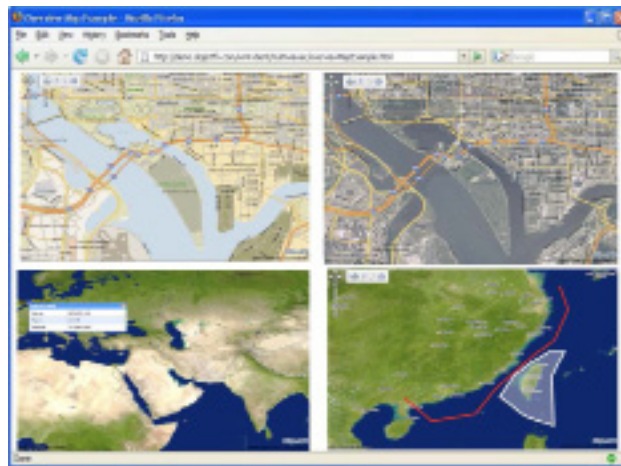
Integrate data from sources such as weather, aircraft and vessel, and view as a single map with the SpatialFX visualization interface.

Benefits of using SpatialFX

- Integrate large amounts of data while retaining a responsive user experience
- Customize pop-ups and mouse-overs
- Edit features using the built-in drawing layer
- Read data from KML/KMZ, GeoRSS, GML, Shapefiles
- Utilize built-in components for pan, zoom, latitude-longitude displays, pop-ups and scalebars
- Deploy to any server as a Java web application
- Incorporate full support of MIL-STD 2525 and DHS symbology
- Directly read NGA and DOD raster and vector formats
- Access imagery and maps through a Google Server or through standards such as OGC WMS
- Integrate as a service with any technology such as Java, .NET, Ruby, PHP, Python and more

SpatialFX WMT allow you to combine raster and vector layers in any order from multiple sources. Refresh each client layer independently, allowing dynamic data to update rapidly without needing to refetch background imagery and maps. Any layer can be manipulated through the Javascript API to reorder layers, turn layers on or off, dynamically add and remove layers and data sources, search and select features, change projections, and show pop-ups and feature details. You can also use the Javascript API to build custom widgets to suit your application, such as interactive legends and search tools.

Numerous data sources and formats are supported ranging from standard NGA and DOD formats to other popular industry standards and commercial formats. You can display multiple map views on a single webpage, allowing users to manipulate each view independently, or link multiple views together to provide capabilities such as an overview-detail map.



Use SpatialFX to visualize complex maps and combine imagery and vector formats.

New features in Version 4.4

- Drawing tools for creating and editing features
- OGC Web Map Service
- Google Server data access
- Enhanced projection support (including Unified Threat Management)
- Multi-layer client (refresh only layers that change)
- Rich client-side plotting

©2011 ObjectFX. SpatialFX® is a trademark of ObjectFX Corp. registered in the U.S. Patent and Trademark Office and elsewhere. SpatialFX is covered by Patent Number 6,604,046 and other issued and pending patents.